

Policy No. :

**500-2**

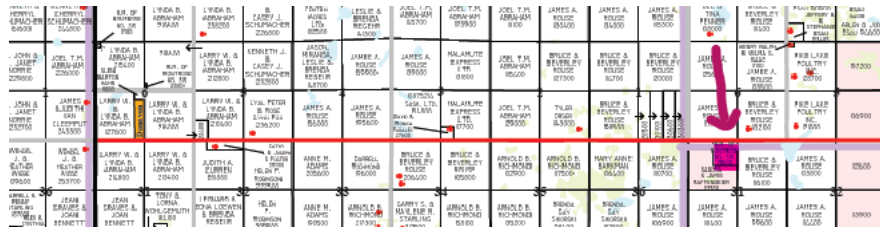
Title:

**Transfer Station**

Date Passed: **2023/11/16**

Resolution No.: **358/23**

The R.M. of Montrose No. 315 owns and manages a waste transfer station located on:  
LS 14, NW 31-32-07-W3.



Public Hours of Operation:

October 1 – April 30	May 1 – September 30
Saturday and Sunday 9am – 4:30pm	Saturday and Sunday 9am – 4:30pm
	Wednesday 5pm – 9pm

Bylaw No. 2018-5 “A Bylaw to Provide For A Base Tax for Waste Disposal” is for Residential tax based properties only. Commercial, Agriculture and Industrial based landowners are required to pay a fee for any waste disposed at the above-mentioned Transfer Station Site.

Residential tax-based properties are permitted 6 standard sized garbage bags per week at the Transfer Station. No carry-over.

The Transfer Station Attendant will itemize the waste brought into the Transfer Station on the “Waste Transfer Site Record” form.

**Fees:**

The Transfer Station Attendant will charge based on the size of the load to all ratepayers and/or renters in the municipality that are not on the Residential Tax Base list or bring in anything other than bagged household garbage. Those fees are:

- Minimum Charge: \$15 Ex. Mattresses, furniture, any “one item” piece.
- Half of a half-ton Truck: \$30
- Half-ton Truck Load: \$60

Fees collected by the Transfer Station Attendant are collected and forwarded to the Municipal Office. Cash, cheque or e-transfers are the only methods of payment at this time.

No items brought to the Transfer Station are permitted to leave the site. Items deposited at the Transfer Station are the property of the RM of Montrose and cannot leave the site unless done so by the waste collection company.

**Regulations outside of the municipality that is followed for the operation of the Transfer Site:**

- The Environmental Protection Act, 2010
- The Municipal Refuse Management Regulations
- Approval to Establish, Construct and/or Operate a Transfer Station

**Regulations within the municipality for the operation of the Transfer Station:**

- Operating Plan for the RM of Montrose Waste Transfer Station
- Bylaw No. 2018-5 A Bylaw to Provide for A Base Tax for Waste Disposal
- Policy 500-2 Transfer Station
- Policy 500-2.1 Transfer Station Attendant Job Description